

Type your family
name in the chat to
let us know you're
here!

2021-
2022



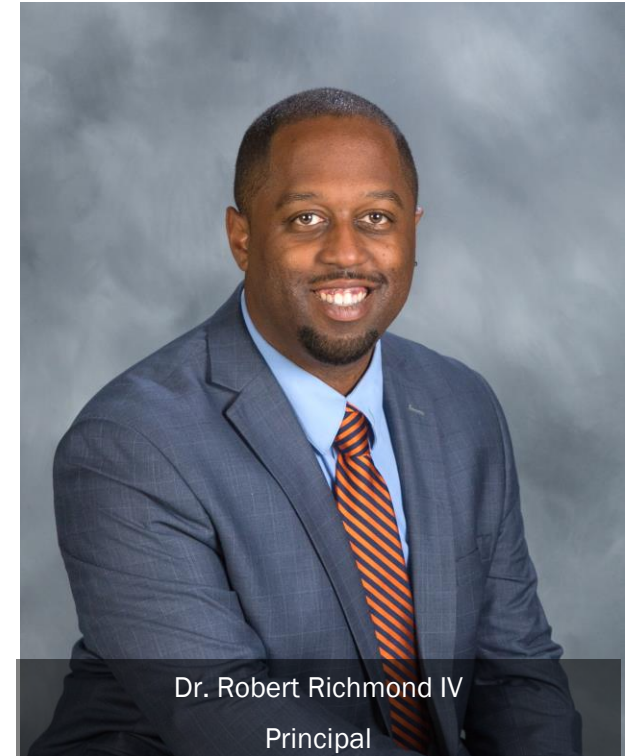
Kindergarten
Orientation

Northern Guilford Elementary

Northern Elementary Administrative Team



Mrs. Nicole Weeks
Assistant Principal



Dr. Robert Richmond IV
Principal



Mrs. Sparrow



Mrs. Browning



Mrs. Schoppa



Ms. Berkeley



Mrs. Easley

**Introducing Our Current
Kindergarten Teachers**



Who is Northern..

Northern ACES

Site Coordinator
Debra McMillian

- 2:25 p.m. - 6:00 p.m.
- Open on Teacher Workdays
- In-house Field Trips
- Tons of Fun
- Awesome Group Leaders
- Opportunity to Complete Homework
- Service Learning Projects



A Day in the Life

School Doors
Open

7:10am

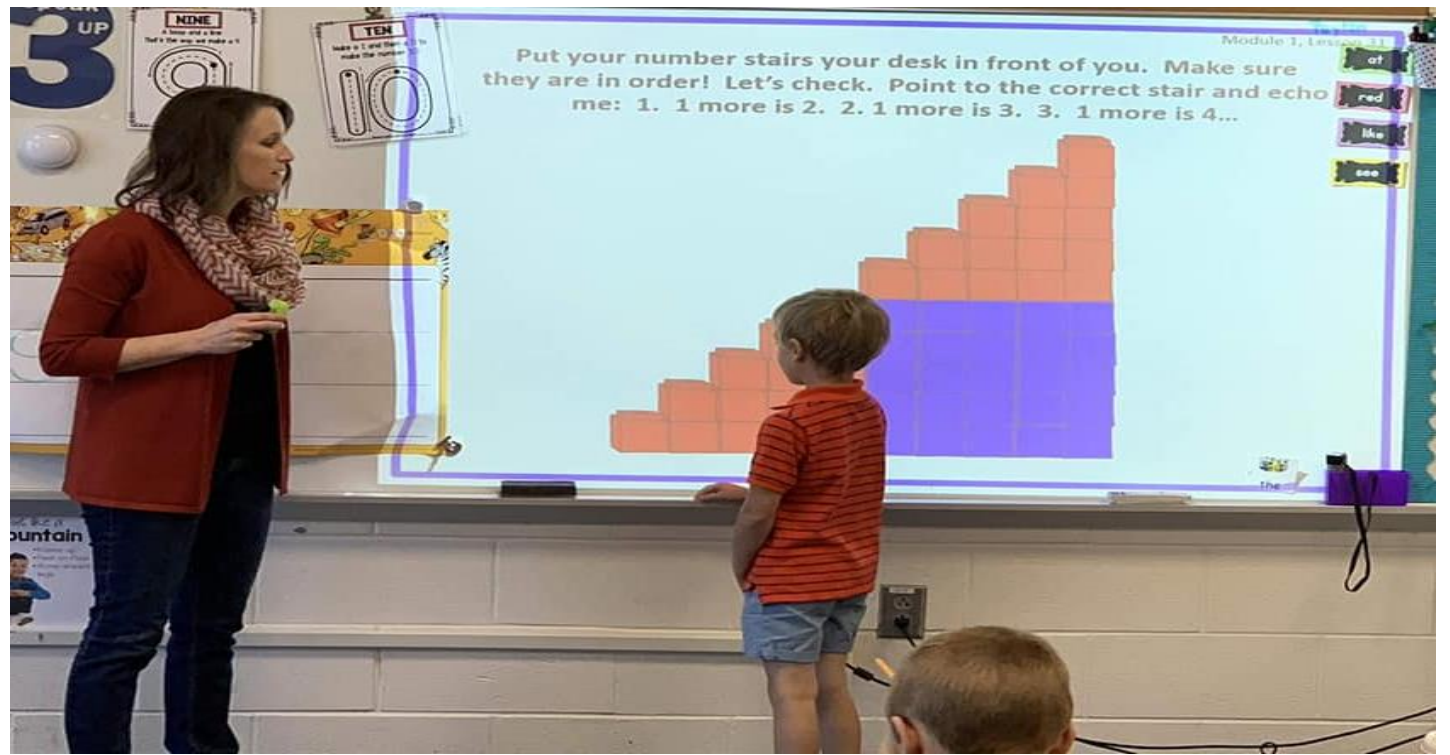
Dismissal Begins

2:05pm



Whole-Group Instruction

Core Knowledge
Language Arts (CKLA)
Eureka Math



Small-Group Instruction

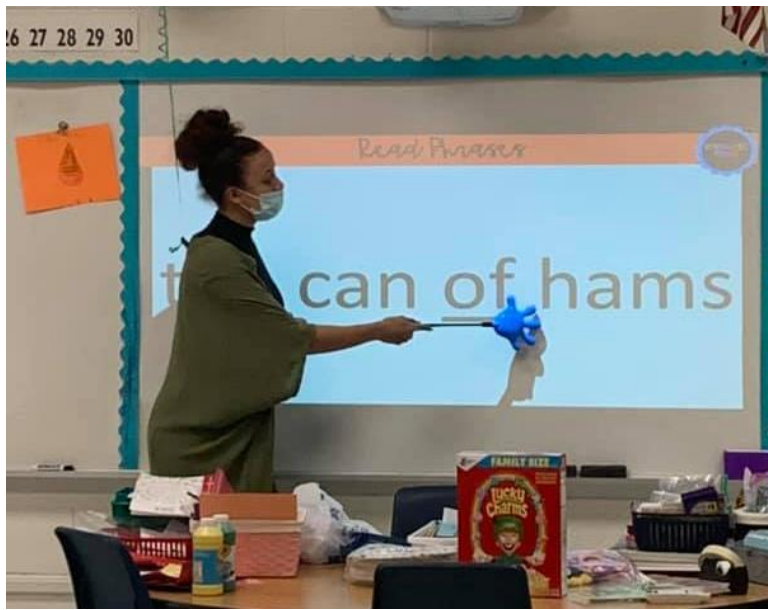
Individualized
Intervention/
Enrichment



Specials Daily

Art
Music
Guidance
Media
N.E.S.T.
Physical Education





Example Schedule

Class Schedule

7:15-7:45 Arrival/Breakfast

7:45-9:00 Math

9:00-10:00 CKLA Listening and Learning

10:00-10:15 Snack

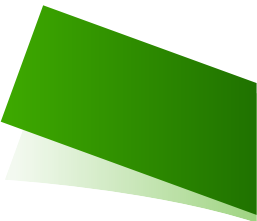
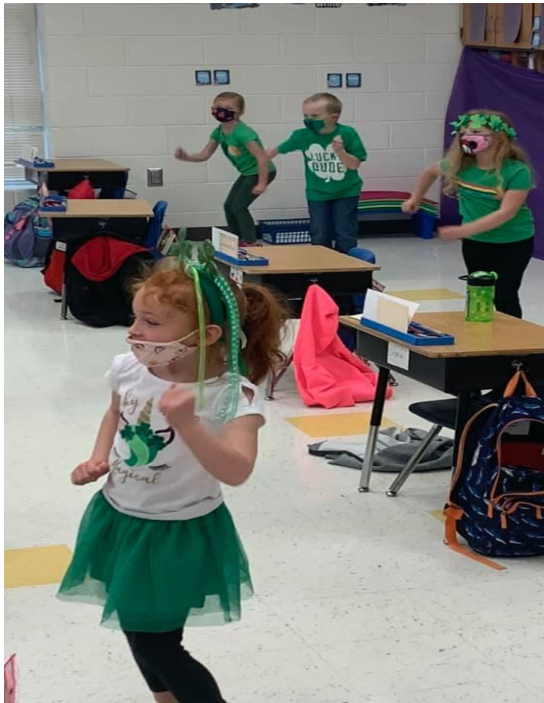
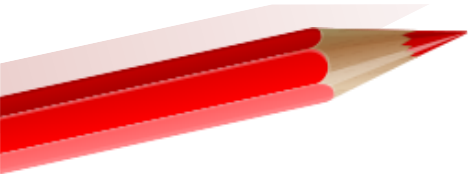
10:15-11:15 CKLA Skills

11:15-11:45 Lunch

11:45-12:15 Recess

12:15-1:00 Specials

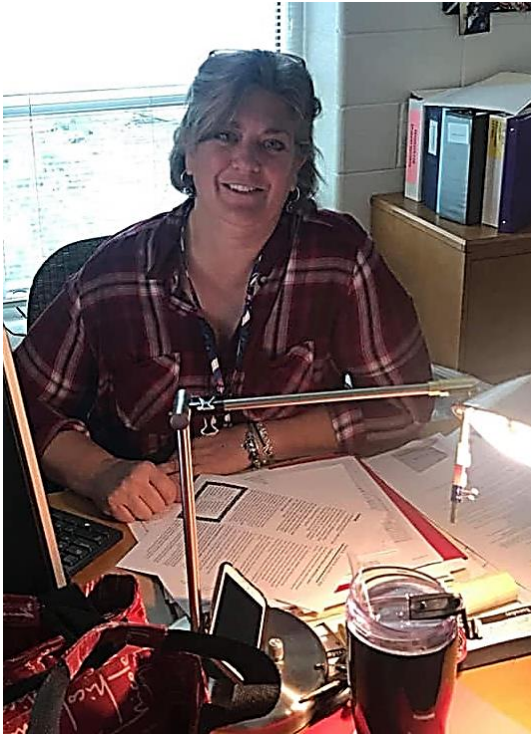
1:00-2:05 Intervention/Enrichment



Field Trips



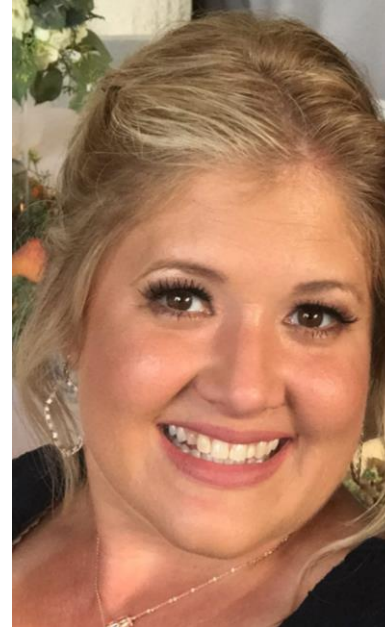
Front Office V.I.P.s



Rebecca Albright
Data Manager



Susan McLemore
Receptionist



Kristin Marsh
Receptionist



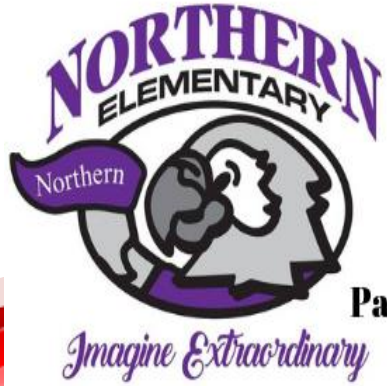
Beverly Shaffner
Treasurer

How can you get involved?

- Join PTA/Committees
- Room Moms
- Join us for lunch
- Hawks Hobbies
- Volunteer in a classroom
- Attend field trips

- 
- Media Center





Northern Nighthawks

PTA

Parent Teacher Association



Popsicles on the Playground



Car Rider Line



Currently

- Starts at 7:10am
- Enter the main driveway as a 1 way-splits into a 2 way
- Merges back into 1 way as you get closer to front of the building
- Students are ready to hop out
- Staff will direct them down the sidewalk and into the building
- Car rider tags for pickup

Typically allow you to walk students in on the
1st Day—See next slide

Getting Started

Month of August

Open House

First Day of School

Teacher Assignments

TBD

*Kindergarten
Screening



Questions

Congratulations
on attending
THE Northern
Elementary

...the best school
in Guilford
County!

